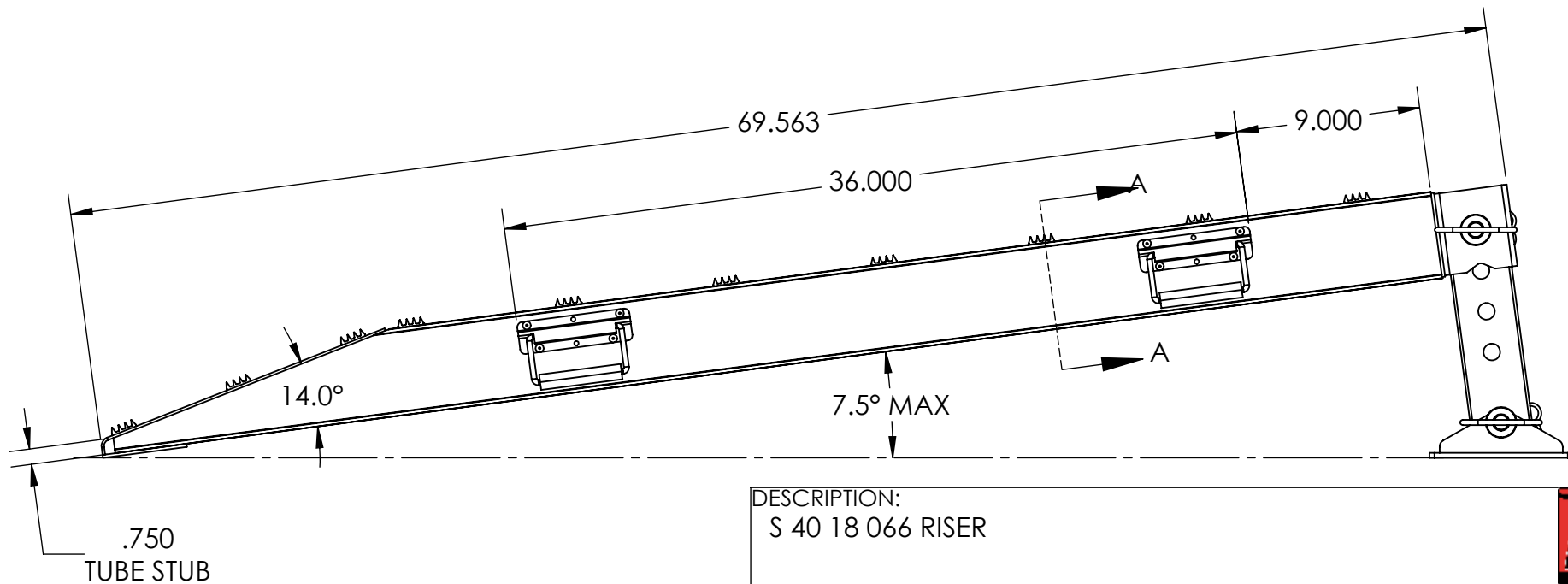


SECTION A-A



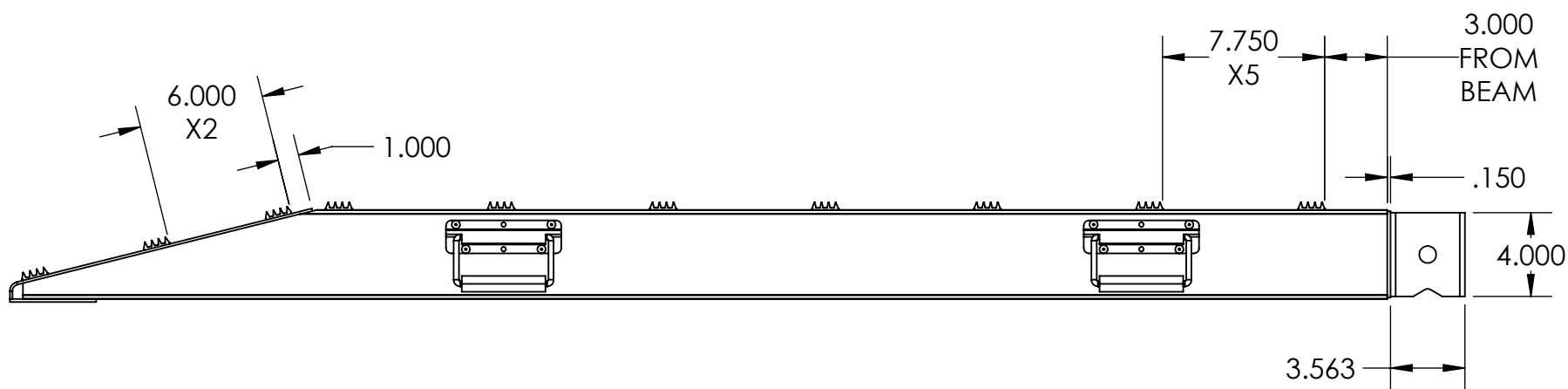
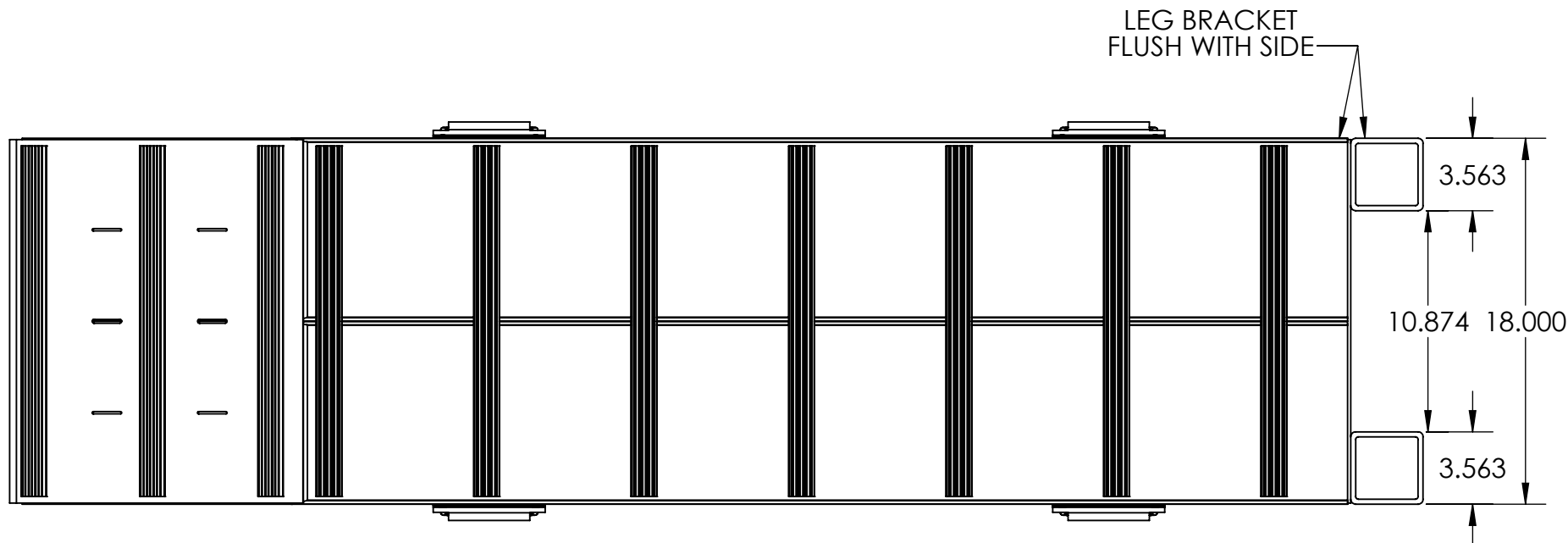
DESCRIPTION:
S 40 18 066 RISER



DRAWN BY: MNL

SPECIFICATIONS		PART #	
LENGTH	66"	S 40 18 066 RISER	
WIDTH	18"		
HEIGHT	6 1/16" - 12"	MATERIAL: -	10/14/2022
CAPACITY	40,000 LBS		
WEIGHT	79 LBS EACH	PATENT #: -	QUOTE #
			Q10113
			REV

This drawing is the property of Heavy Duty Ramps. This drawing is not to be made public, copied, duplicated or shown to any unauthorized party. The information contained on this drawing is confidential and proprietary. This drawing must be returned, after the use thereof is completed. All intellectual property rights reserved.



DESCRIPTION:
Q10113 RAMP STRUCTURE

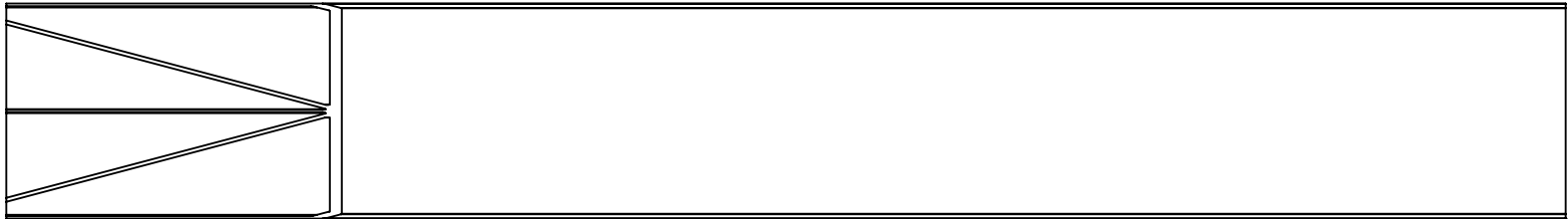
SHEET 2 OF 10



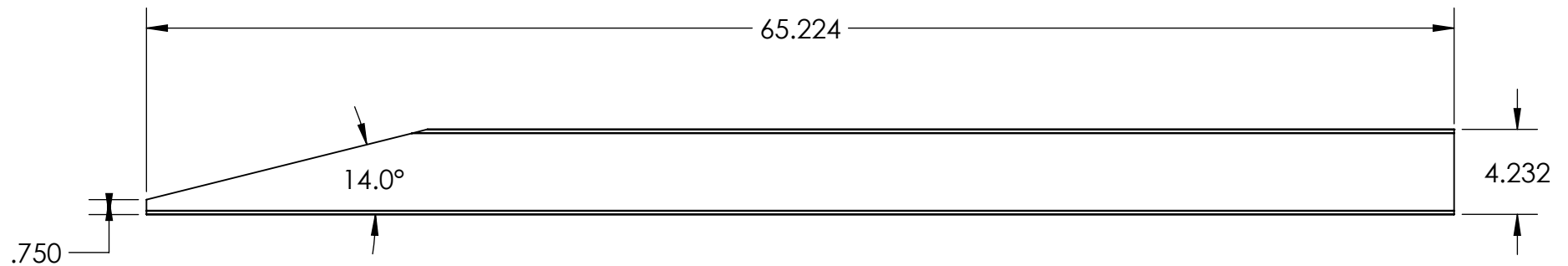
DRAWN BY: MNL

SPECIFICATIONS		PART #		DRAWN BY: MNL	
LENGTH	-				
WIDTH	-				
HEIGHT	-				
CAPACITY	-	MATERIAL: -	10/14/2022	REV	
WEIGHT	-	PATENT #: -	QUOTE # Q10113	-	

This drawing is the property of Heavy Duty Ramps. This drawing is not to be made public, copied, duplicated or shown to any unauthorized party. The information contained on this drawing is confidential and proprietary. This drawing must be returned, after the use thereof is completed. All intellectual property rights reserved.



beam must be cut as shown above. Center with 3 ribs must be at top of angle cut.



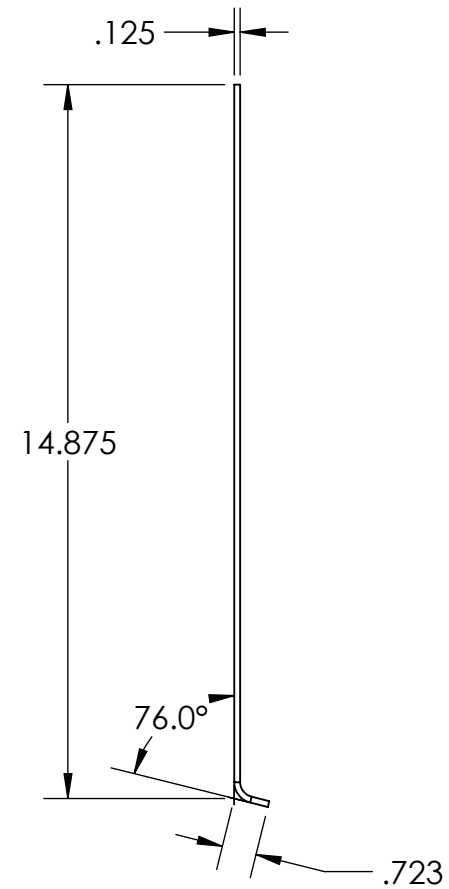
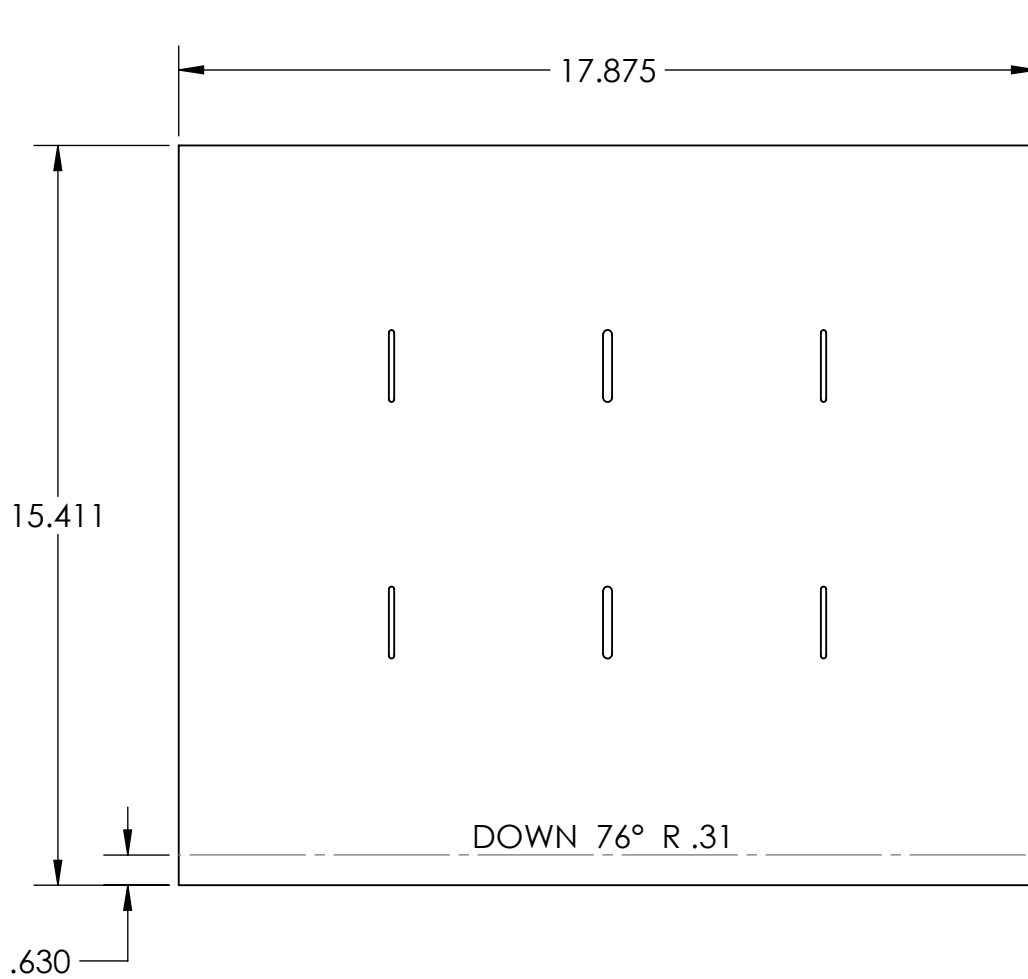
DESCRIPTION:
Q10113 4.25" X 9" TRUSS TUBE

SHEET 3 OF 10



DRAWN BY: MNL

SPECIFICATIONS		PART #		
LENGTH	65.224	Q10113 BEAM		
WIDTH	9"			
HEIGHT	4.5"			
CAPACITY	-	MATERIAL: 6061-T6 (SS)	10/14/2022	REV
WEIGHT		PATENT #: -	QUOTE #	



DESCRIPTION:
Q10113 FOOT PLATE

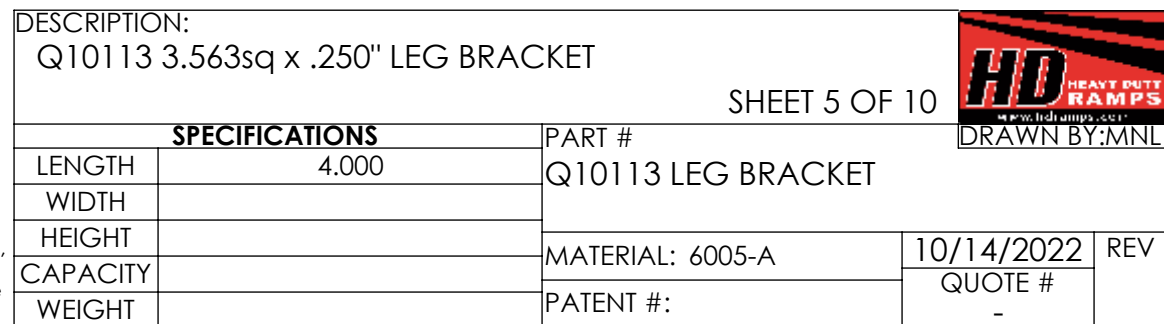
SHEET 4 OF 10



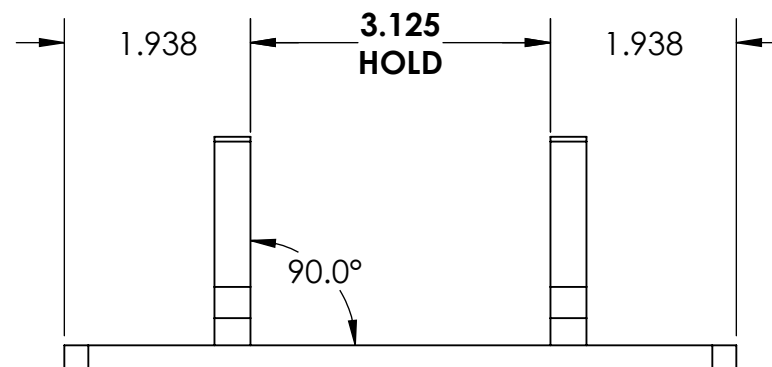
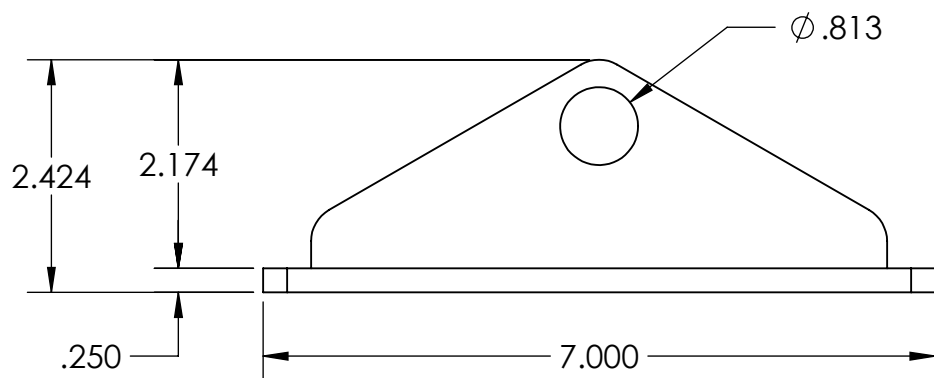
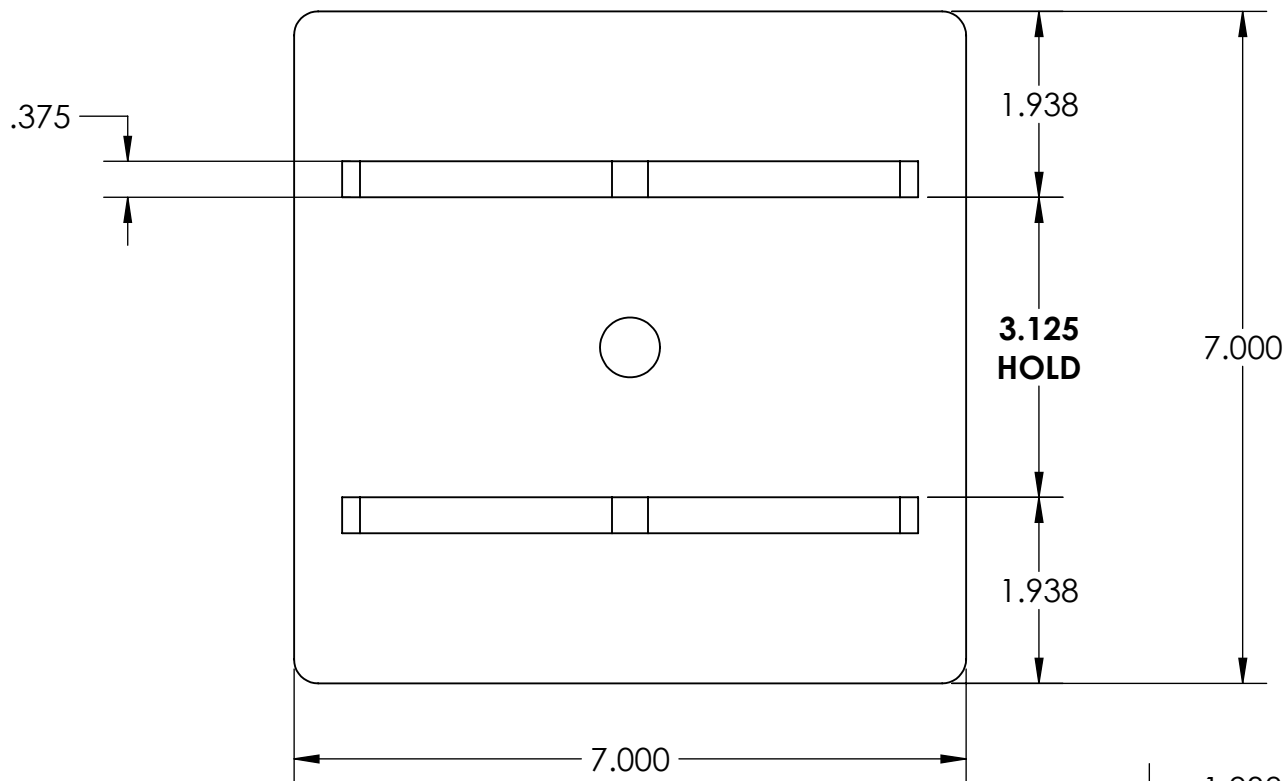
DRAWN BY: MNL

SPECIFICATIONS		PART #		
LENGTH	.125 X 15 5/8" X 17.875	Q10113 FOOT PLATE		
WIDTH	-			
HEIGHT	-	MATERIAL: 5052-H32	10/14/2022	REV
CAPACITY	-			
WEIGHT	-	PATENT #: -	QUOTE #	

This drawing is the property of Heavy Duty Ramps. This drawing is not to be made public, copied, duplicated or shown to any unauthorized party. The information contained on this drawing is confidential and proprietary. This drawing must be returned, after the use thereof is completed. All intellectual property rights reserved.



This drawing is the property of Heavy Duty Ramps. This drawing is not to be made public, copied, duplicated or shown to any unauthorized party. The information contained on this drawing is confidential and proprietary. This drawing must be returned, after the use thereof is completed. All intellectual property rights reserved.



DESCRIPTION:
Q10113 PIVOT FOOT ASSY

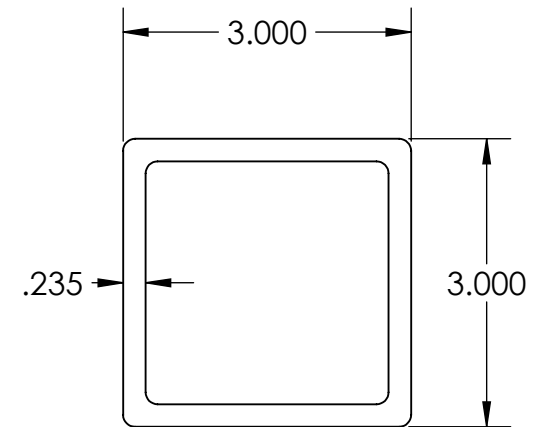
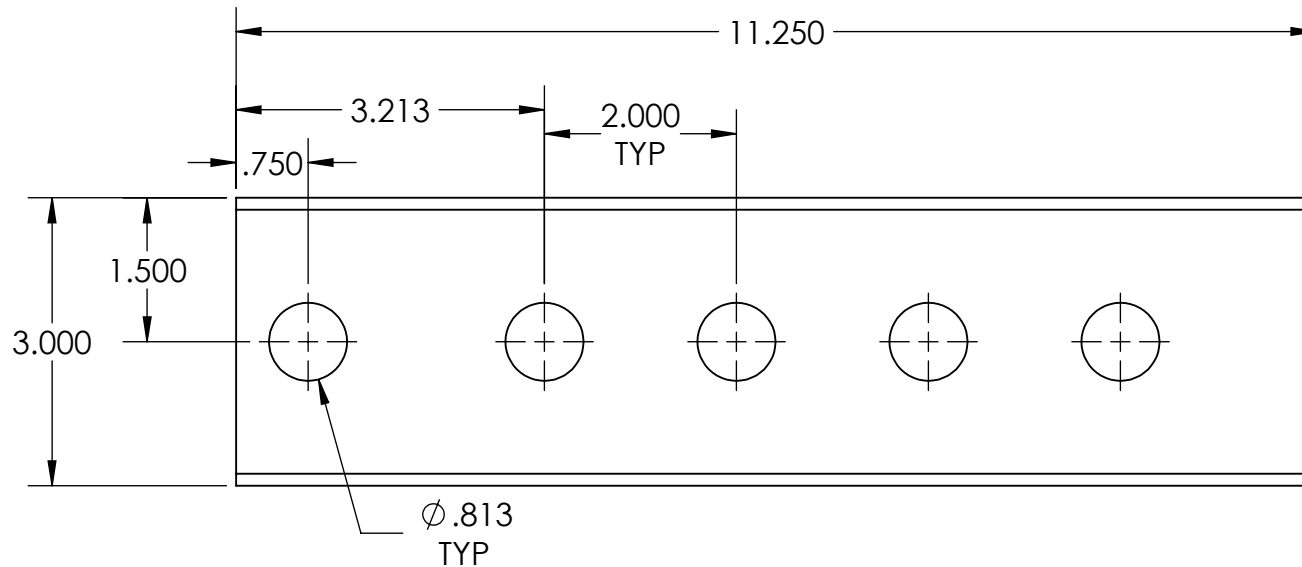
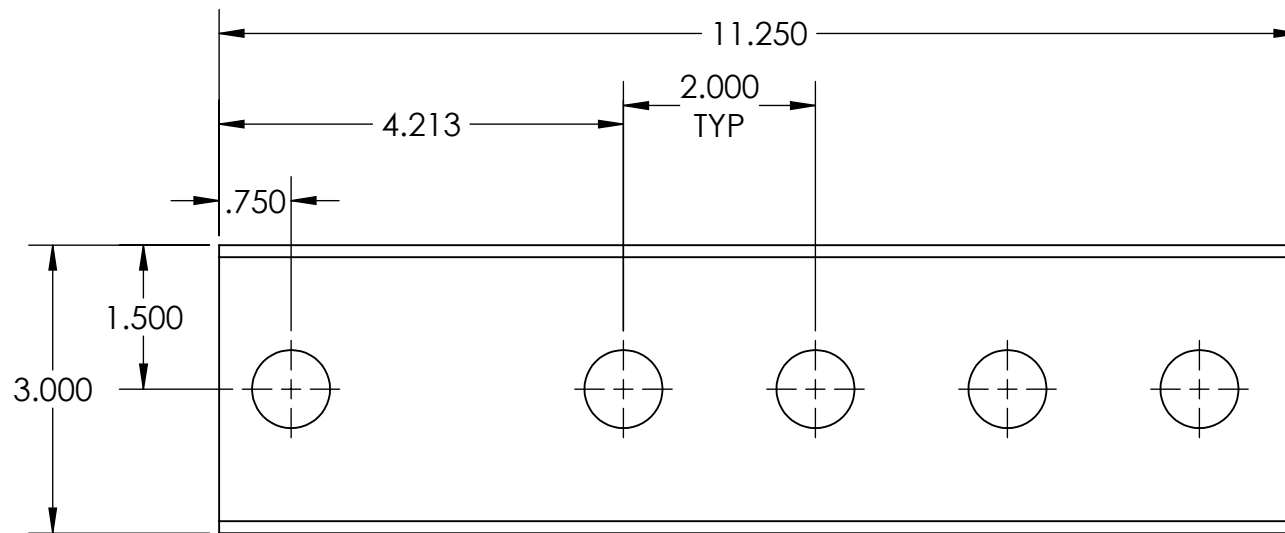
SHEET 6 OF 10



DRAWN BY: MNL

SPECIFICATIONS		PART #		
LENGTH	-	Q10113 PIVOT FOOT ASSY		
WIDTH	-			
HEIGHT	-			
CAPACITY	-			
WEIGHT	-			
		MATERIAL: -	10/14/2022	REV
		PATENT #: -	QUOTE #	
			Q10113	

This drawing is the property of Heavy Duty Ramps. This drawing is not to be made public, copied, duplicated or shown to any unauthorized party. The information contained on this drawing is confidential and proprietary. This drawing must be returned, after the use thereof is completed. All intellectual property rights reserved.



DESCRIPTION:
Q10113 3sq x .235 LEG TUBE

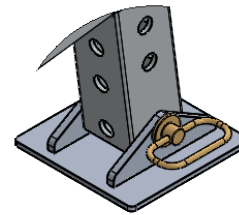
SHEET 7 OF 10



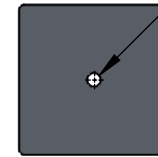
DRAWN BY: MNL

SPECIFICATIONS		PART #	
LENGTH	11.250	Q10113 LEG TUBE	
WIDTH			
HEIGHT			
CAPACITY		MATERIAL: 6005-A	10/14/2022
WEIGHT		PATENT #:	QUOTE #
			Q10113
			REV

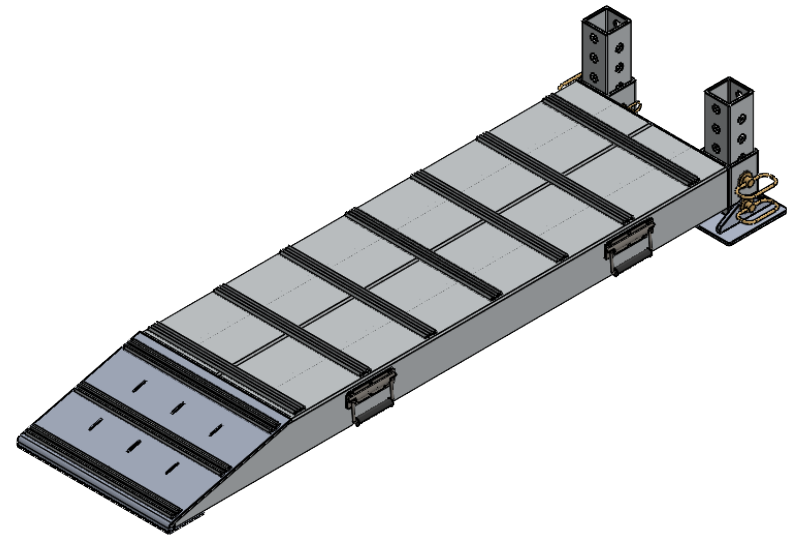
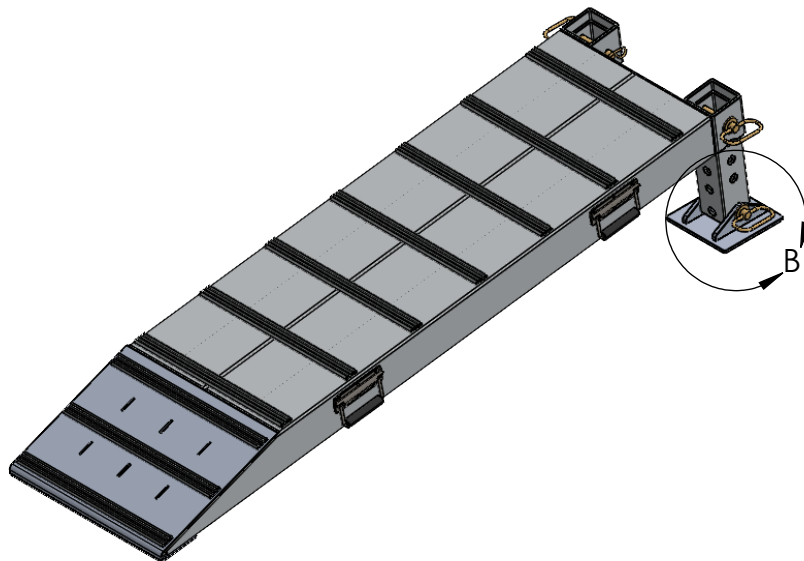
This drawing is the property of Heavy Duty Ramps. This drawing is not to be made public, copied, duplicated or shown to any unauthorized party. The information contained on this drawing is confidential and proprietary. This drawing must be returned, after the use thereof is completed. All intellectual property rights reserved.



DETAIL B



Ø .625 HOLE
IN CENTER FOR CONCRETE
FASTENER IF DESIRED.



DESCRIPTION:
S 40 18 066 RISER

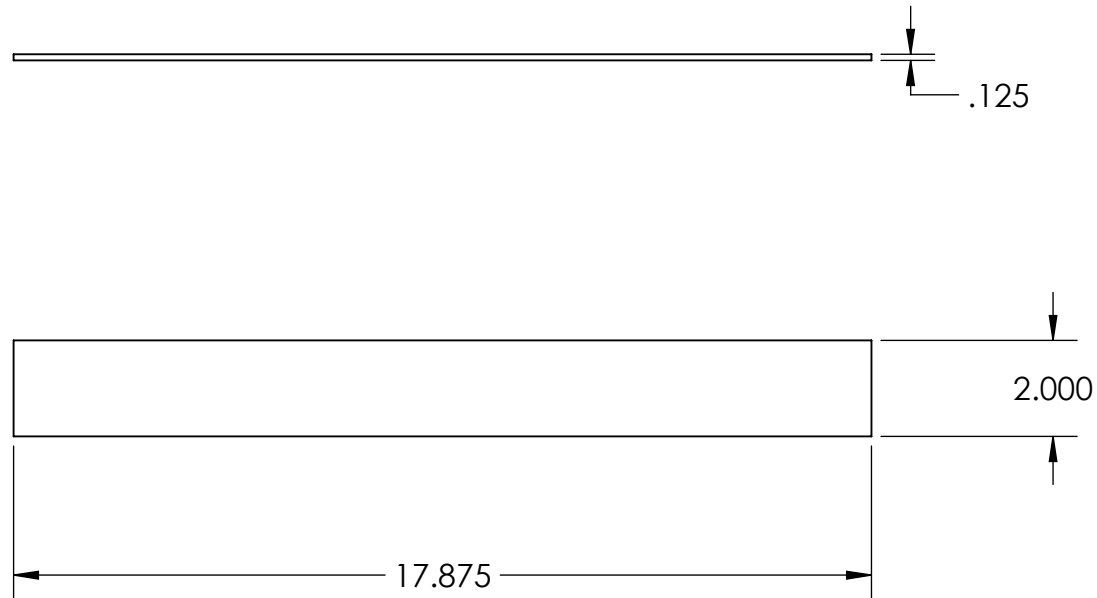
SHEET 8 OF 10



DRAWN BY: MNL

SPECIFICATIONS		PART #	
LENGTH	66"	S 40 18 066 RISER	
WIDTH	18"		
HEIGHT	6 1/16" - 12"	MATERIAL: -	10/14/2022
CAPACITY	40,000 LBS		QUOTE #
WEIGHT	79 LBS EACH	PATENT #: -	Q10113
			REV

This drawing is the property of Heavy Duty Ramps. This drawing is not to be made public, copied, duplicated or shown to any unauthorized party. The information contained on this drawing is confidential and proprietary. This drawing must be returned, after the use thereof is completed. All intellectual property rights reserved.



DESCRIPTION:
Q10113 BOTTOM NOSE PLATE



SPECIFICATIONS		PART #		
LENGTH	17.875 X 2.000	Q10113 BOTTOM NOSE PLATE		
WIDTH				
HEIGHT	-	MATERIAL: 5052-H32	10/14/2022	REV
CAPACITY	-			
WEIGHT	-	PATENT #: -	QUOTE #	

DRAWN BY: MNL

This drawing is the property of Heavy Duty Ramps. This drawing is not to be made public, copied, duplicated or shown to any unauthorized party. The information contained on this drawing is confidential and proprietary. This drawing must be returned, after the use thereof is completed. All intellectual property rights reserved.

BOM Table

QTY.	LENGTH	DESCRIPTION	NOTES	MATERIAL PART #
2	65.224	Default		AL5050
1	.125 X 15 5/8" X 17.875	Q10113 FOOT PLATE	MESSER - BEND	AL7020
2	4.000	Q10113 3.563sq x .250" LEG BRACKET	MACHINE	AL4011
10	17.250	Q10113 TALL CLEAT		AL6076
2	.150 X 4.125 X 17.875	Q10113 TUBE CAP	MESSER	AL7021
2	11.250	Q10113 3sq x .235 LEG TUBE	MACHINE	AL4010
2	.250 X 7.000 X 7.000	Q10113 FOOT BASE PLATE	MESSER	AL7012
4	.375 X 2.174 X 6.000	Q10113 FOOT SIDE PLATE	MESSER	AL7006
4		.75" x 4.25" HITCH PIN	-	FW1003 (PARTS-STAND-PIN)
4		HAIR PIN		FW1004 (PARTS-HITCH-PIN-CLIP)
4	-	Q8550 STAINLESS STEEL DROP HANDLE		HW1046
16	-	3/16" STAINLESS STEEL RIVET	SSB6-6S - .251-.375" GRIP RANGE	H1410

DESCRIPTION:

SHEET 10 OF 10



DRAWN BY:MNL

SPECIFICATIONS

PART #

LENGTH

WIDTH

HEIGHT

CAPACITY

WEIGHT

MATERIAL:

PATENT #:

10/14/2022

QUOTE #

REV

This drawing is the property of Heavy Duty Ramps. This drawing is not to be made public, copied, duplicated or shown to any unauthorized party. The information contained on this drawing is confidential and proprietary. This drawing must be returned, after the use thereof is completed. All intellectual property rights reserved.