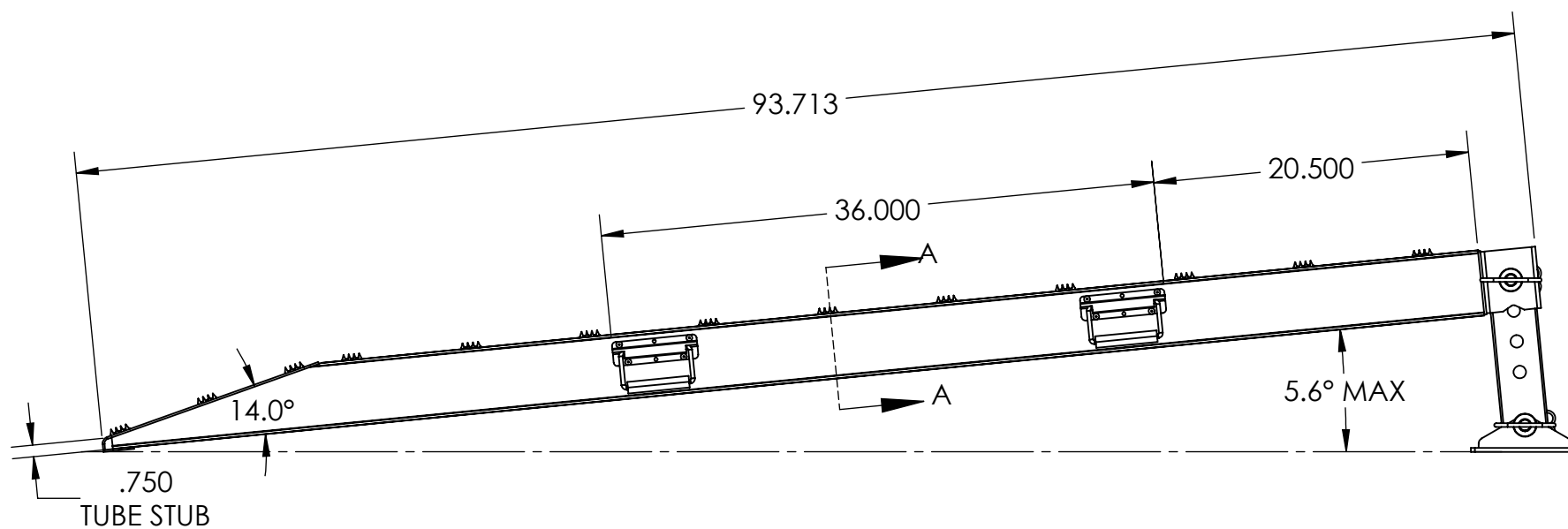


SECTION A-A



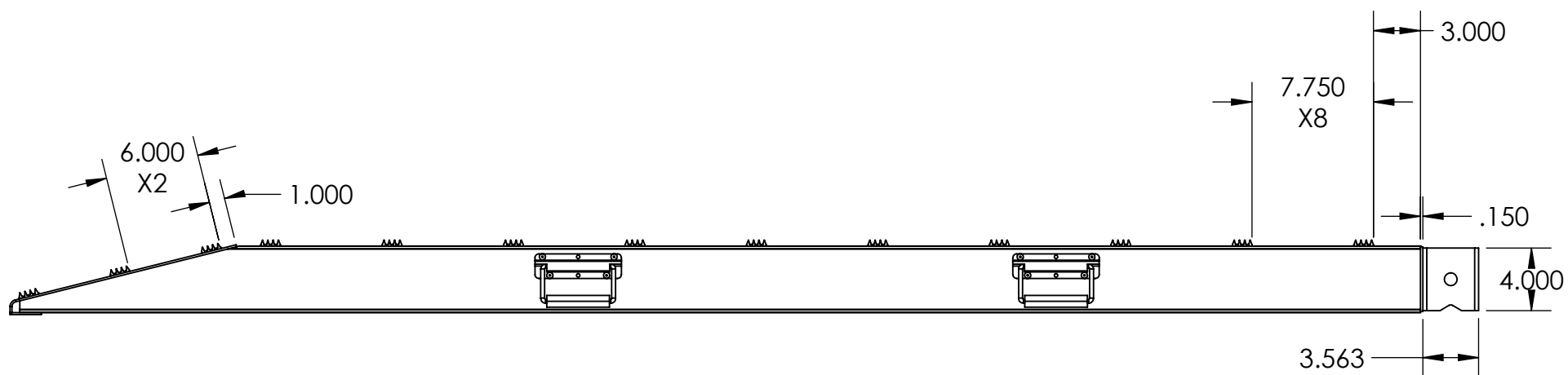
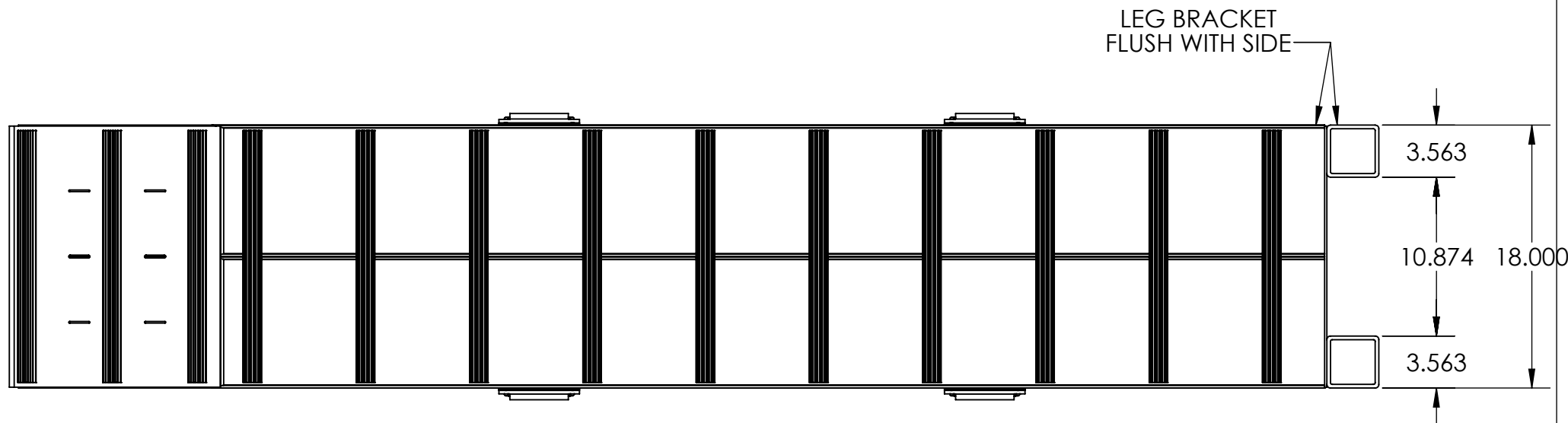
DESCRIPTION:
S 40 18 090 RISER



DRAWN BY: MNL

SPECIFICATIONS		PART #	
LENGTH	93 1/8"	S 40 18 090 RISER	
WIDTH	18"		
HEIGHT	6 3/16" - 12 5/16"	MATERIAL: -	11/17/2022
CAPACITY	40,000 LBS		
WEIGHT	103 LBS EACH	PATENT #: -	QUOTE #
			Q10115
			REV

This drawing is the property of Heavy Duty Ramps. This drawing is not to be made public, copied, duplicated or shown to any unauthorized party. The information contained on this drawing is confidential and proprietary. This drawing must be returned, after the use thereof is completed. All intellectual property rights reserved.



DESCRIPTION:
Q10115 RAMP STRUCTURE

SHEET 2 OF 10



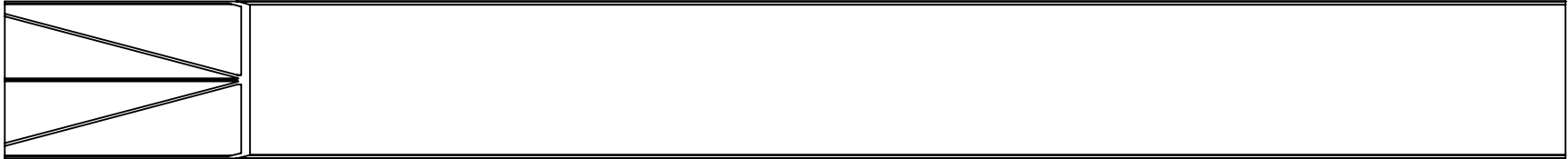
DRAWN BY: MNL

SPECIFICATIONS		PART #	
LENGTH	-	MATERIAL: - PATENT #: -	11/17/2022 QUOTE # Q10115
WIDTH	-		
HEIGHT	-		
CAPACITY	-		
WEIGHT	-		

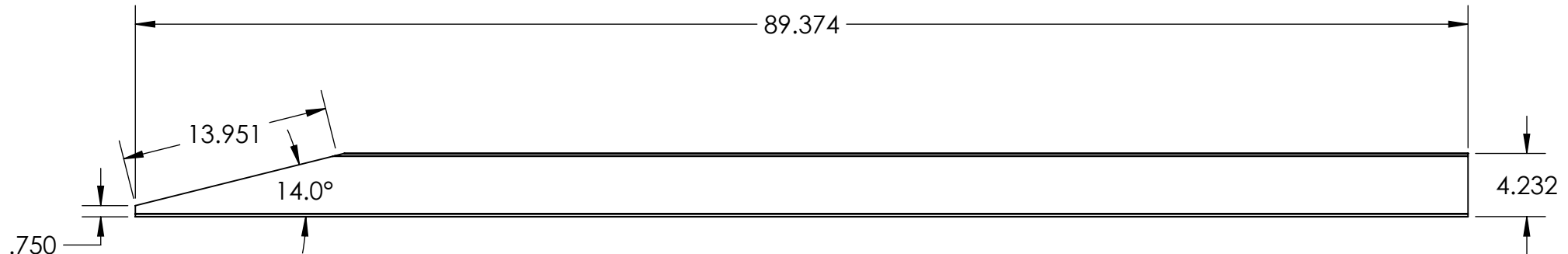
REV

■

This drawing is the property of Heavy Duty Ramps. This drawing is not to be made public, copied, duplicated or shown to any unauthorized party. The information contained on this drawing is confidential and proprietary. This drawing must be returned, after the use thereof is completed. All intellectual property rights reserved.



beam must be cut as shown above. Center with 3 ribs must be at top of angle cut.



DESCRIPTION:
Q10115 4.25" X 9" TRUSS TUBE

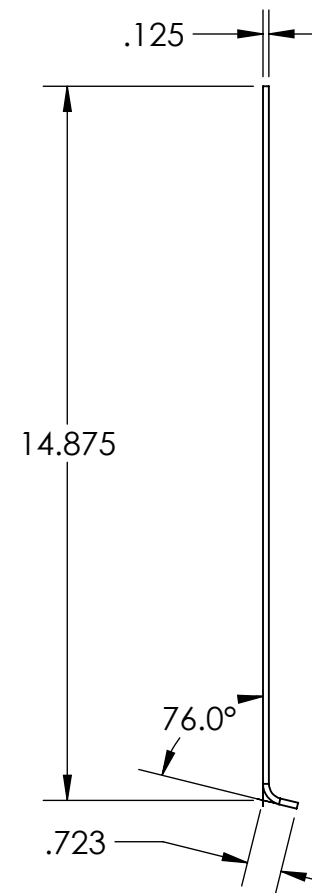
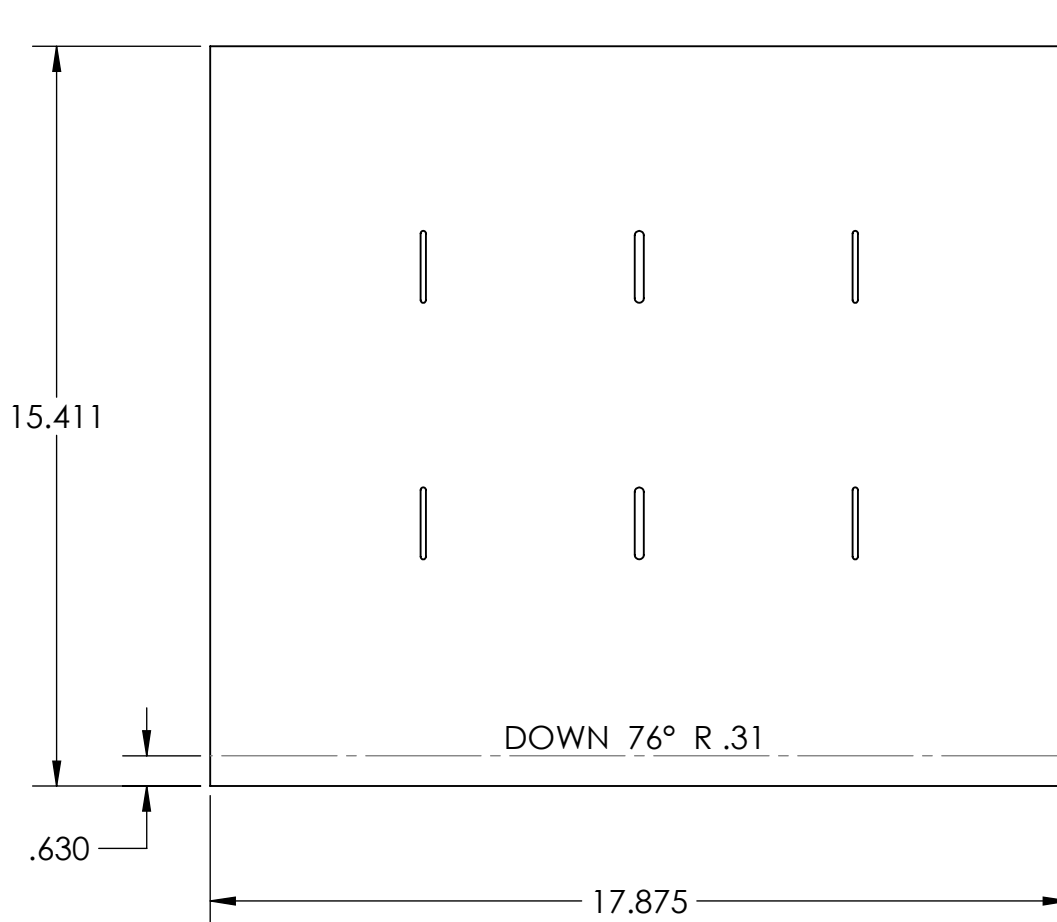
SHEET 3 OF 10



DRAWN BY: MNL

SPECIFICATIONS		PART #		
LENGTH	89.374	Q10115 BEAM		
WIDTH	9"			
HEIGHT	4.5"			
CAPACITY	-	MATERIAL: 6061-T6 (SS)	11/17/2022	REV
WEIGHT		PATENT #: -	QUOTE #	

This drawing is the property of Heavy Duty Ramps. This drawing is not to be made public, copied, duplicated or shown to any unauthorized party. The information contained on this drawing is confidential and proprietary. This drawing must be returned, after the use thereof is completed. All intellectual property rights reserved.



DESCRIPTION:
Q10115 FOOT PLATE

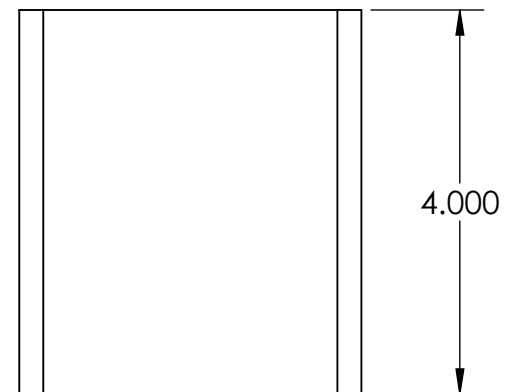
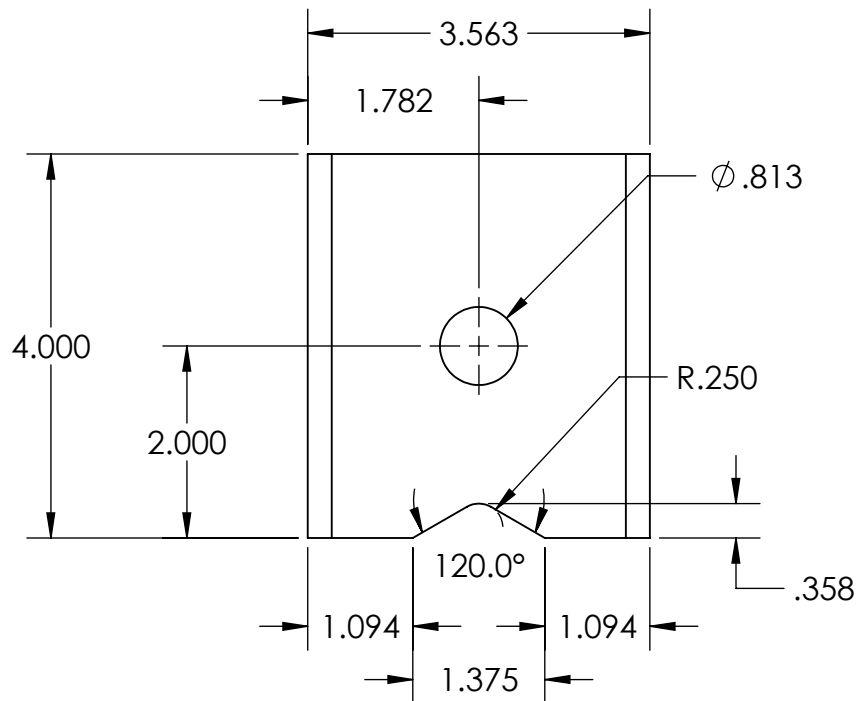
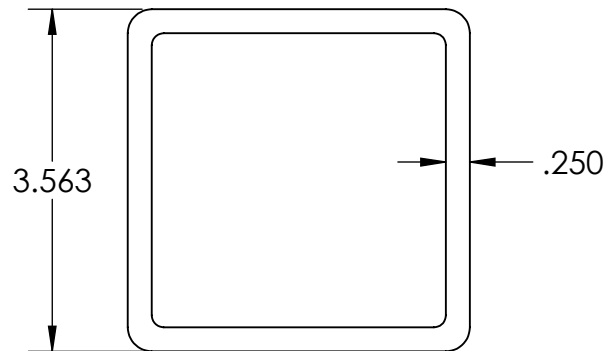
SHEET 4 OF 10



DRAWN BY: MNL

SPECIFICATIONS		PART #		
LENGTH	.125 X 15 7/16" X 17.875	Q10115 FOOT PLATE		
WIDTH	-			
HEIGHT	-			
CAPACITY	-	MATERIAL: 5052-H32	11/17/2022	REV
WEIGHT	-	PATENT #: -	QUOTE #	

This drawing is the property of Heavy Duty Ramps. This drawing is not to be made public, copied, duplicated or shown to any unauthorized party. The information contained on this drawing is confidential and proprietary. This drawing must be returned, after the use thereof is completed. All intellectual property rights reserved.



DESCRIPTION:
Q10115 3.563sq x .250" LEG BRACKET

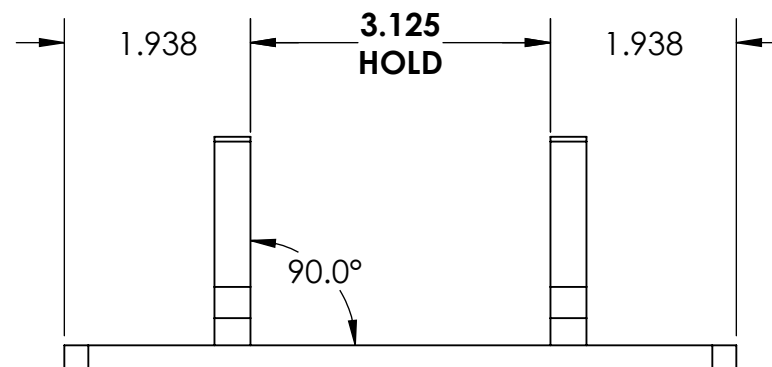
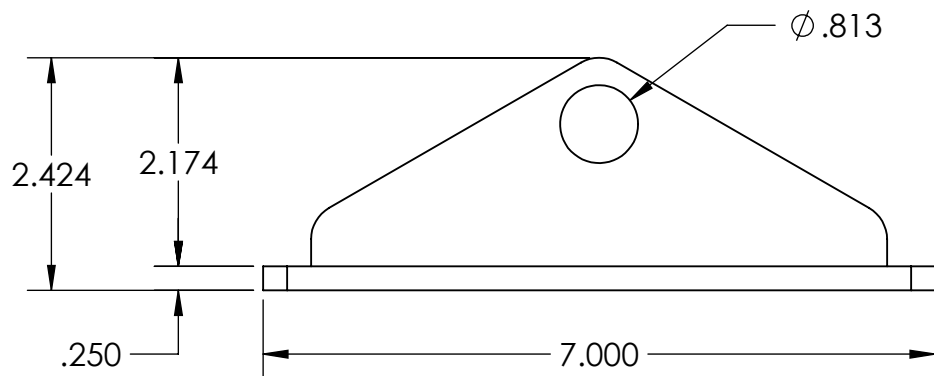
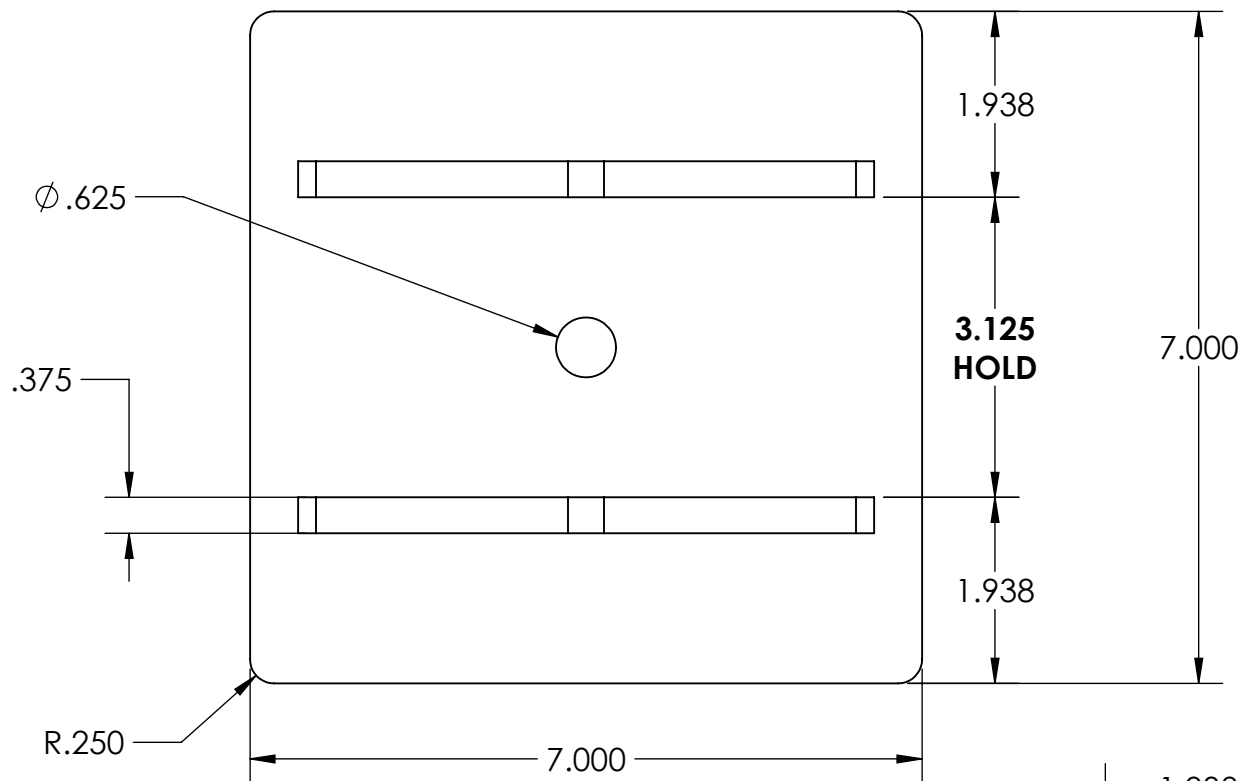
SHEET 5 OF 10



DRAWN BY: MNL

SPECIFICATIONS		PART #		
LENGTH	4.000	Q10115 LEG BRACKET		
WIDTH				
HEIGHT				
CAPACITY				
WEIGHT		MATERIAL: 6005-A	11/17/2022	REV
		PATENT #:	QUOTE #	
			-	

This drawing is the property of Heavy Duty Ramps. This drawing is not to be made public, copied, duplicated or shown to any unauthorized party. The information contained on this drawing is confidential and proprietary. This drawing must be returned, after the use thereof is completed. All intellectual property rights reserved.



DESCRIPTION:
Q10115 PIVOT FOOT ASSY

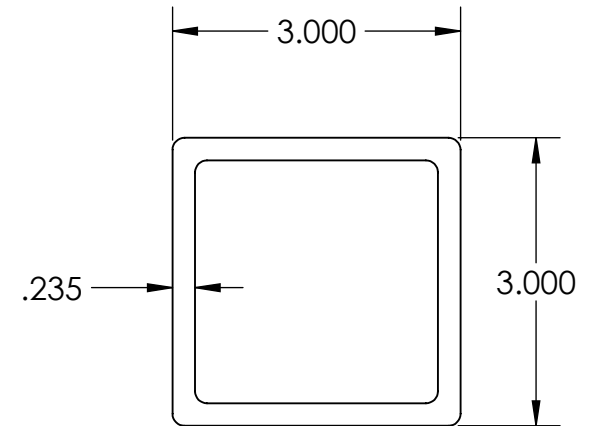
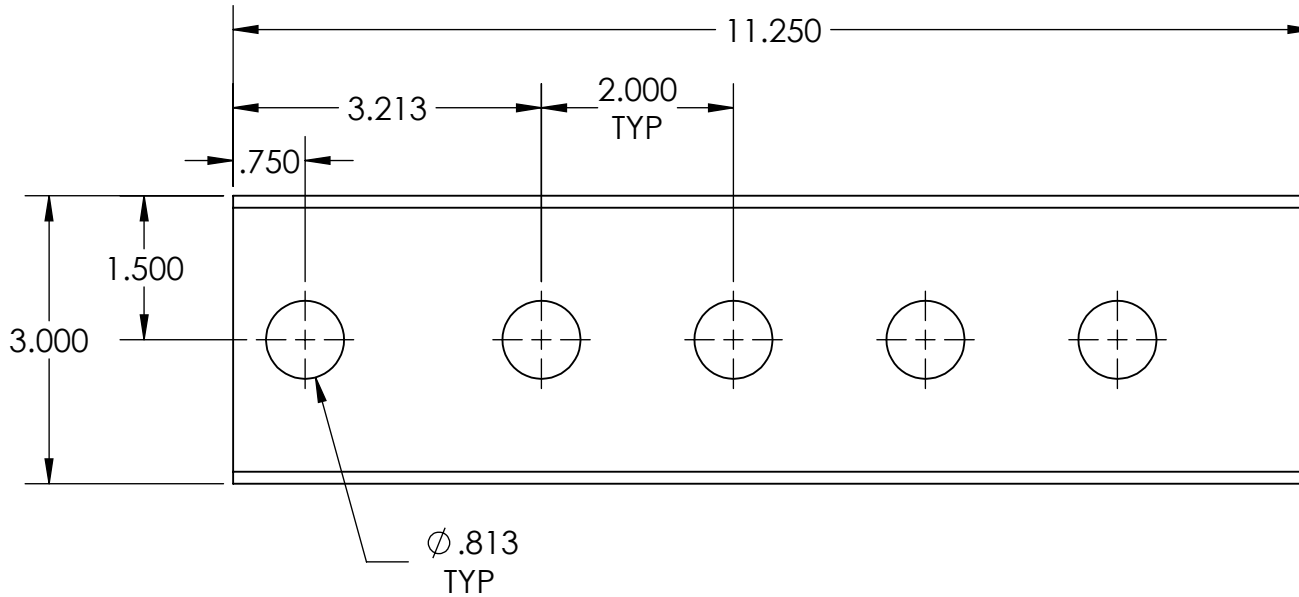
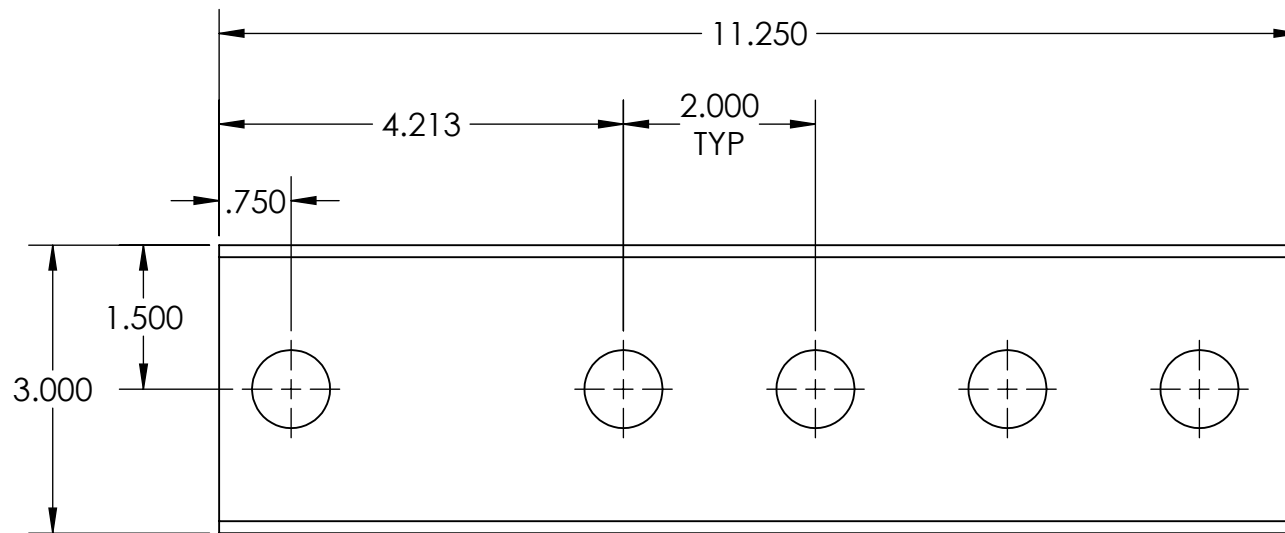
SHEET 6 OF 10



DRAWN BY: MNL

SPECIFICATIONS		PART #		DRAWN BY: MNL	
LENGTH	-	Q10115 PIVOT FOOT ASSY			
WIDTH	-				
HEIGHT	-	MATERIAL: -		11/17/2022	REV
CAPACITY	-			QUOTE #	
WEIGHT	-	PATENT #: -		Q10115	

This drawing is the property of Heavy Duty Ramps. This drawing is not to be made public, copied, duplicated or shown to any unauthorized party. The information contained on this drawing is confidential and proprietary. This drawing must be returned, after the use thereof is completed. All intellectual property rights reserved.



DESCRIPTION:
 Q10115 3sq X .235" LEG TUBE

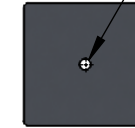
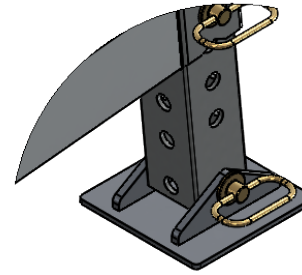
SHEET 7 OF 10



DRAWN BY: MNL

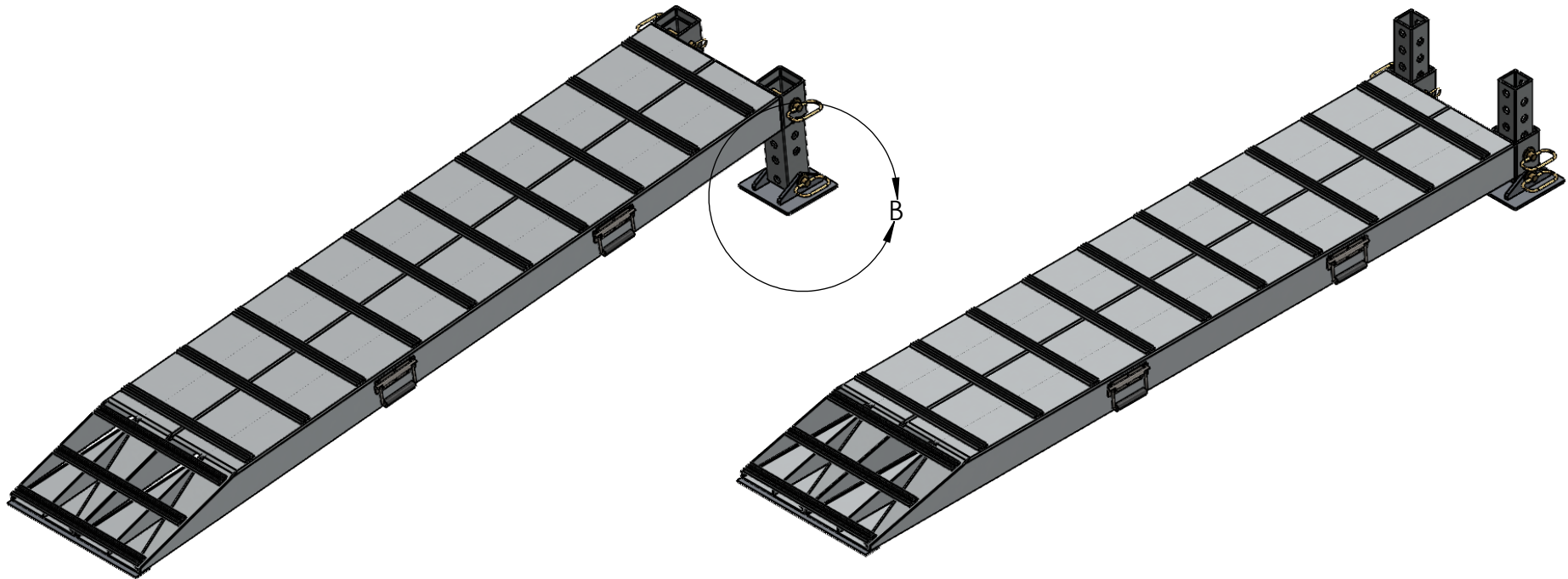
SPECIFICATIONS		PART #	
LENGTH	11.250	Q10115 LEG TUBE	
WIDTH			
HEIGHT			
CAPACITY		MATERIAL: 6005-A	11/17/2022
WEIGHT		PATENT #:	QUOTE #
			Q10115
			REV

This drawing is the property of Heavy Duty Ramps. This drawing is not to be made public, copied, duplicated or shown to any unauthorized party. The information contained on this drawing is confidential and proprietary. This drawing must be returned, after the use thereof is completed. All intellectual property rights reserved.



Ø .625 HOLE
IN CENTER FOR CONCRETE
FASTENER IF DESIRED.

DETAIL B



DESCRIPTION:
S 40 18 090 RISER

SHEET 8 OF 10

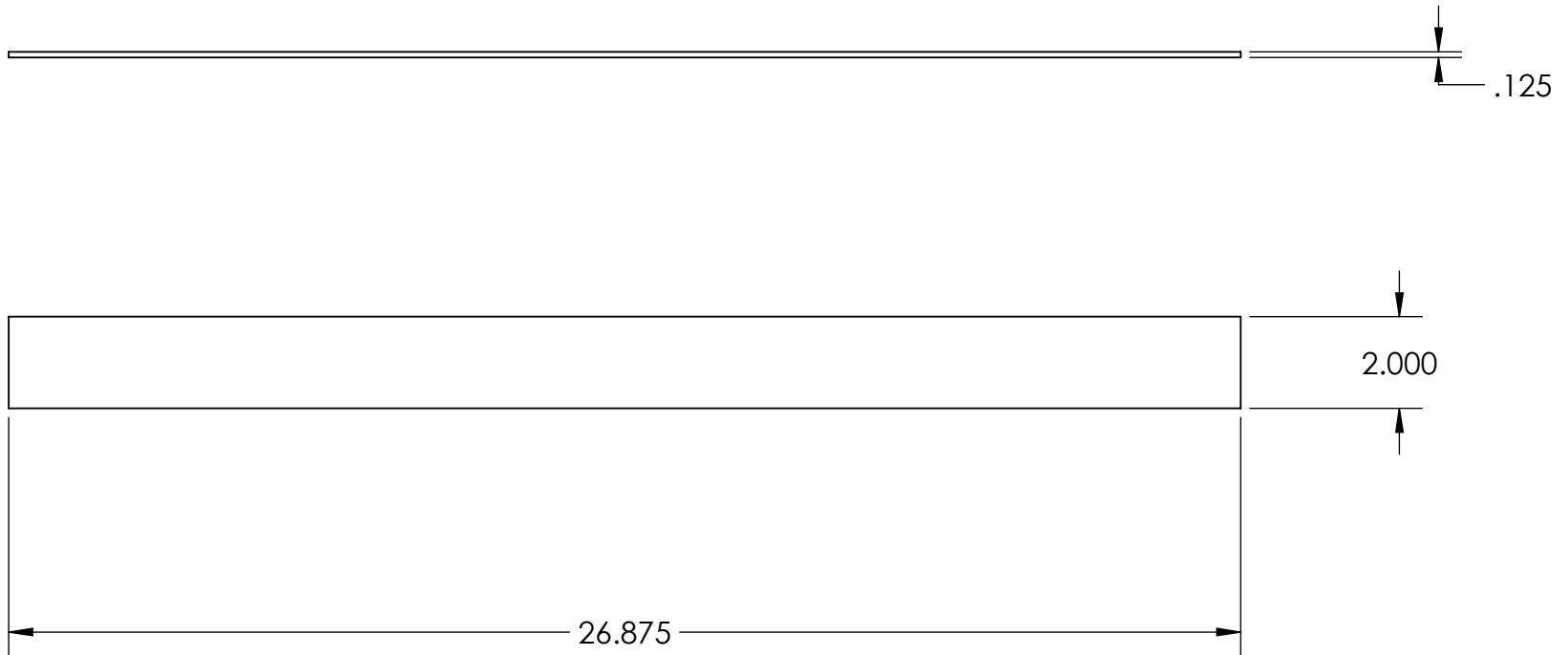


DRAWN BY: MNL

www.fdramps.com

SPECIFICATIONS		PART #		DRAWN BY: MNL	
LENGTH	93 1/8"	S 40 18 090 RISER			
WIDTH	18"				
HEIGHT	6 3/16" - 12 5/16"				
CAPACITY	40,000 LBS	MATERIAL: -	11/17/2022	REV	
WEIGHT	103 LBS EACH	PATENT #: -	QUOTE # Q10115		
				-	

This drawing is the property of Heavy Duty Ramps. This drawing is not to be made public, copied, duplicated or shown to any unauthorized party. The information contained on this drawing is confidential and proprietary. This drawing must be returned, after the use thereof is completed. All intellectual property rights reserved.



DESCRIPTION:
Q10113 BOTTOM NOSE PLATE



www.indiumparts.com

SPECIFICATIONS		PART #		DRAWN BY: MNL	
LENGTH	26.875 X 2.000	Q10113 BOTTOM NOSE PLATE			
WIDTH					
HEIGHT	-				
CAPACITY	-	MATERIAL: 5052-H32	11/17/2022	REV	
WEIGHT	-	PATENT #: -	QUOTE #		

DRAWN BY: MNL

This drawing is the property of Heavy Duty Ramps. This drawing is not to be made public, copied, duplicated or shown to any unauthorized party. The information contained on this drawing is confidential and proprietary. This drawing must be returned, after the use thereof is completed. All intellectual property rights reserved.

MAKES ONE RAMP

QTY.	LENGTH	DESCRIPTION	NOTES	MATERIAL PART #
2	89.374	ADJUSTABLE WHEEL RISER 90 inches		AL5050
1	.125 X 15 7/16" X 17.875	Q10115 FOOT PLATE	MESSER - BEND	AL7020
2	4.000	Q10115 3.563sq x .250" LEG BRACKET	MACHINE	AL4011
13	17.250	Q10115 TALL CLEAT		AL6076
1	.150 X 4.125 X 17.875	Q10115 TUBE CAP		AL7021
1	17.875 X 2.000	Q10115 BOTTOM NOSE PLATE	MESSER	AL7020
2	11.250	Q10115 3sq X .235" LEG TUBE	MACHINE	AL4010
2	.250 X 7.000 X 7.000	Q10115 FOOT BASE PLATE	MESSER	AL7012
4	.375 X 2.174 X 6.000	Q10115 FOOT SIDE PLATE	MESSER	AL7006
4		.75" x 4.25" HITCH PIN	-	FW1003 (PARTS-STAND-PIN)
4		HAIR PIN		FW1004 (PARTS-HITCH-PIN-CLIP)
4	-	Q8550 STAINLESS STEEL DROP HANDLE		HW1046
16	-	3/16" STAINLESS STEEL RIVET	SSB6-6S - .251-.375" GRIP RANGE	H1410

DESCRIPTION:

SHEET 10 OF 10



DRAWN BY:MNL

SPECIFICATIONS		PART #	
LENGTH			
WIDTH			
HEIGHT			
CAPACITY			
WEIGHT		MATERIAL:	11/17/2022
		PATENT #:	QUOTE #
			REV

This drawing is the property of Heavy Duty Ramps. This drawing is not to be made public, copied, duplicated or shown to any unauthorized party. The information contained on this drawing is confidential and proprietary. This drawing must be returned, after the use thereof is completed. All intellectual property rights reserved.